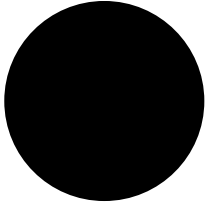


The Study



Please enable JavaScript



Link

Embed

Copy and paste this HTML code into your webpage to embed.

Can A Cocktail Of Vitamins And Steroids Cure A Major Killer In Hospitals?

Sure it can because that cocktail mimics the ketogenic diet. *In a 5 G world this might be the most common serious cause of death I expect to see spike in the next 5-7 years.*

Both ideas cause a recycling of cell water in the cytoplasm. I don't believe keto is a weight loss Rx at its core either. It is something rather different that mimics the effect of Vitamin C in cleaning the TCA and urea cycle of deuterium at Kreb's bicycle. Because of the shape of our teeth and the shortening of our gut humans lost their requirements for Vitamin C but it raised our needs for marine fats, iodine, and animal fat. This fostered a seasonal ketosis that turned over the cell water in the matrix.

Nature 150, 21-21 (04 July 1942) | doi:10.1038/150021a0

Metabolic Water and Desiccation

KENNETH MELLANBY

THE utilization by the body of ingested food substances and of tissue reserves yields among other things quantities of metabolic water. As the complete combustion of 100 gm. of fat produces about 110 gm. of metabolic water, whereas 100 gm. of carbohydrate yields only 55 gm. of water, fat reserves and fatty foods are believed to be particularly valuable as a protection against desiccation. This contention would appear to be supported by the fact that many animals which exist in deserts have large reserves of fat.

Ketosis is a novel seasonal way to drive matrix water replacement while autophagy can control cell membrane turnover and the movements of deuterium. In sepsis, both autophagy and apoptosis are uncoupled because of defective enzyme kinetics at fumerase, so this acutely lead to multiple organ failures quickly and causes a quick death.

FAT OXIDATION = MORE MATRIX WATER

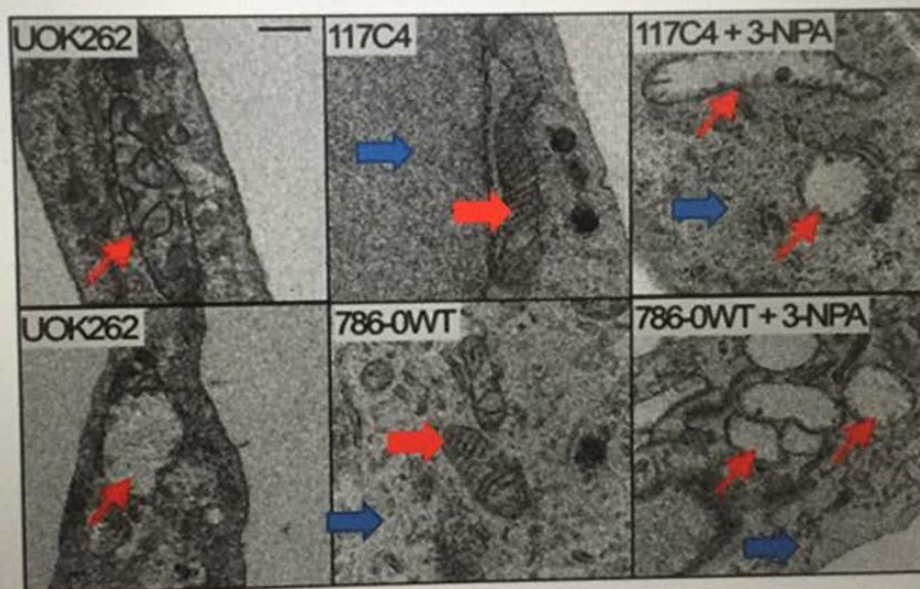
**MATRIX WATER = RECYCLING IN MALATE AND
NADPH DURING METFORMIN DRIVEN
UNCOUPLING**

WHAT ELSE IS DIFFERENT ABOUT MATRIX WATER

**AMOUNTS OF METABOLIC WATER
PRODUCED IN MITOCHONDRIA DEPEND ON
THE SUBSTRATE GROUP BEING OXIDIZED**

It would be wise for hospitals to use red light in these patients rooms at the same time but they do not appear to understand that the 4th and 5th cytochrome react briskly to red light even when ECT is broken. This could be extended if windows were opened in an ICU to allow UV-A light in to patient room to help re-establish apoptosis. Another helpful adjunct would be the use of IV DDW. To date no one has tried this in the literature as far as I can tell.

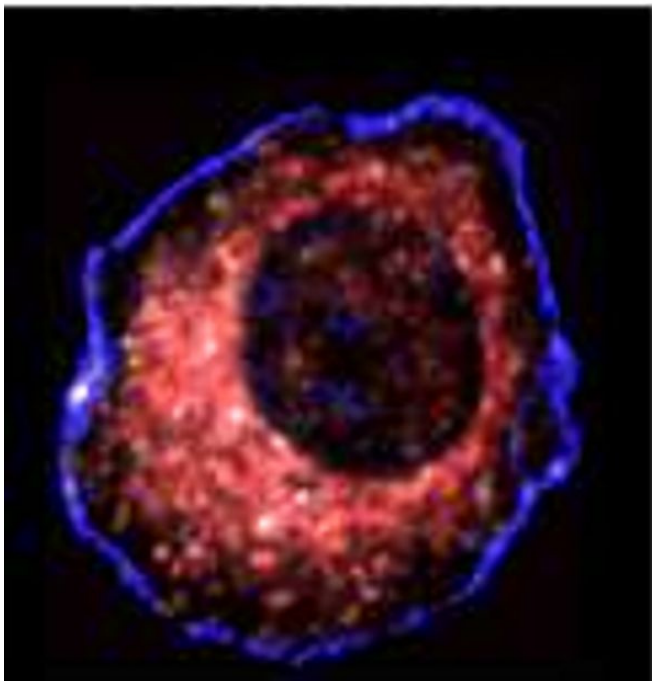
WHEN METABOLIC WATER DOES NOT GET RECYCLED CANCER DEVELOPS



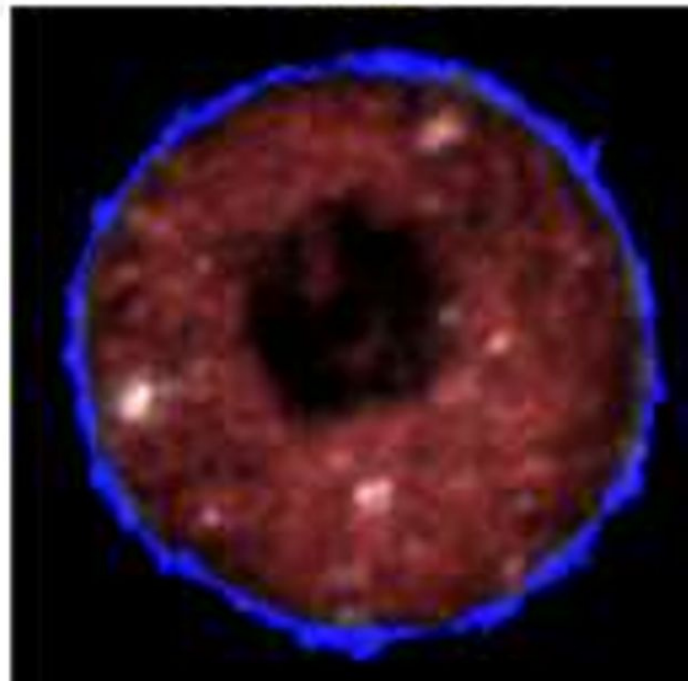
This is so powerful, that in some cancers ketosis can exhibit synergistic antitumor activity

and preferentially kill tumor cells by autschizis, a novel type of necrosis characterized by exaggerated membrane damage and progressive loss of organelle-free cytoplasm through a series of self-excisions. During this process, the nucleus becomes smaller, cell size decreases one-half to one-third of its original size, and most organelles surround an intact nucleus in a narrow rim of cytoplasm. This narrow rim is the key marker for extreme turnover of cell water.

Normal

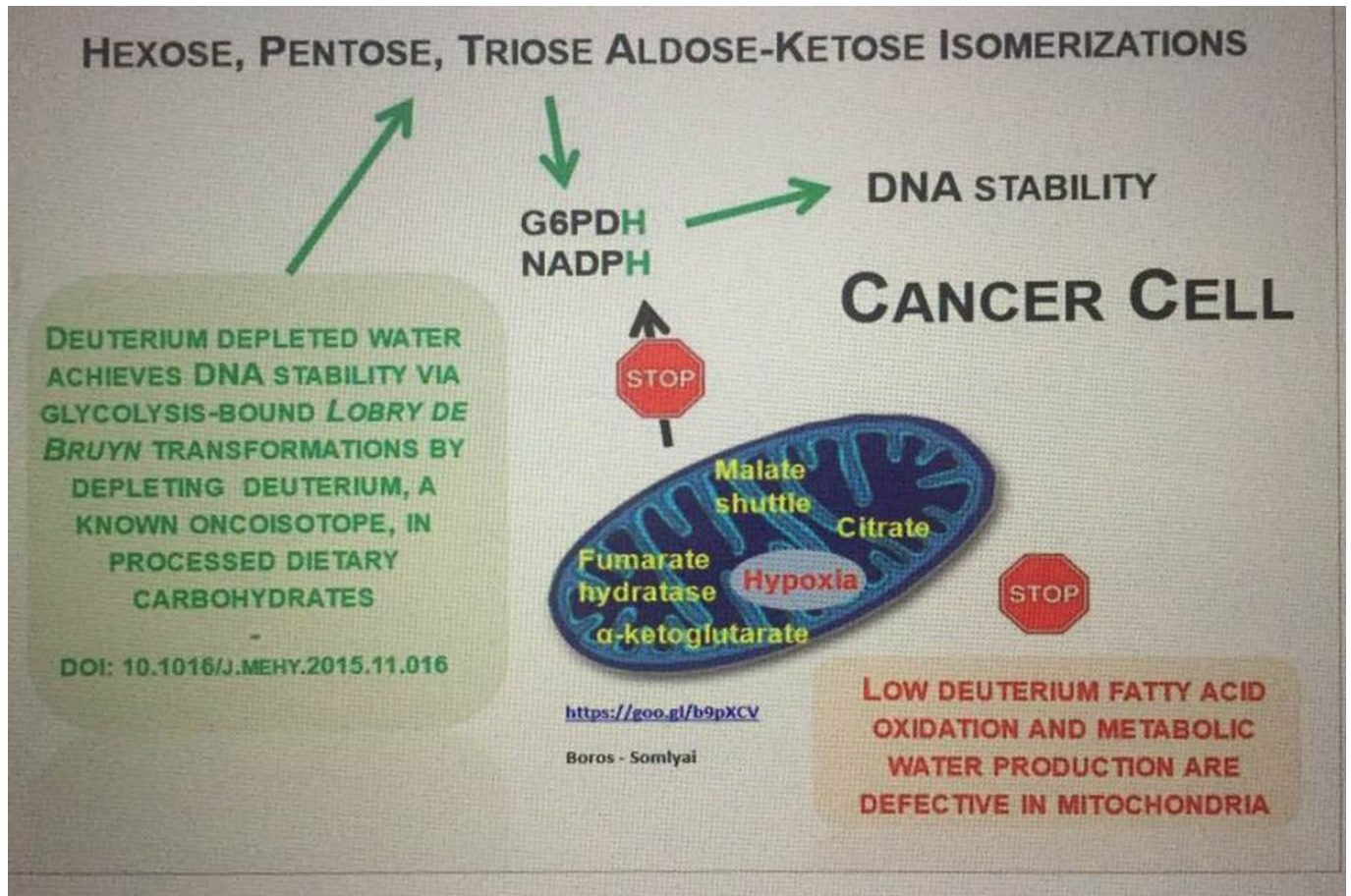


Cancer



The key in sepsis and cancer is to change the fractionation of hydrogen in the cytosol. In sepsis, the cytoplasm becomes acutely overloaded with deuterium, but in cancer, it is a chronic change. In both cases, the cytoplasm is loaded with the wrong type of hydrogen isotope used in the urea and TCA cycle. While the mitochondria are condensed, tumor cell

death does not result from ATP depletion.



CITES

<https://www.npr.org/sections/health-shots/2018/05/11/609149556/can-a-cocktail-of-vitamins-and-steroids-cure-a-major-killer-in-hospitals>